

Crouzet Virtual Display Tutorial



YOU CHOOSE THE DEVICE AND HOW TO CONNECT IT!



Download it for FREE:



Table of content

1	FILES DIRECTORY	3
2	UTILIZATION OF CVD PC	3
2.1	USER INTERFACE	3
2.2	THE CONNECTION	4
3	UTILIZATION OF CVD SMARTPHONE	5
3.1	USER INTERFACE	5
3.2	THE CONNECTION	5
3.3	UPTDATE FIRMWARE	6
3.4	READ /WRITE PROGRAM	6
3.5	READ DATALOG	7
3.6	SHARE DATALOG / PROGRAM	7
3.7	READ /WRITE TIME	7
3.8	DIAGNOSTIC	8
3.9	RUN /STOP	8

1 FILES DIRECTORY

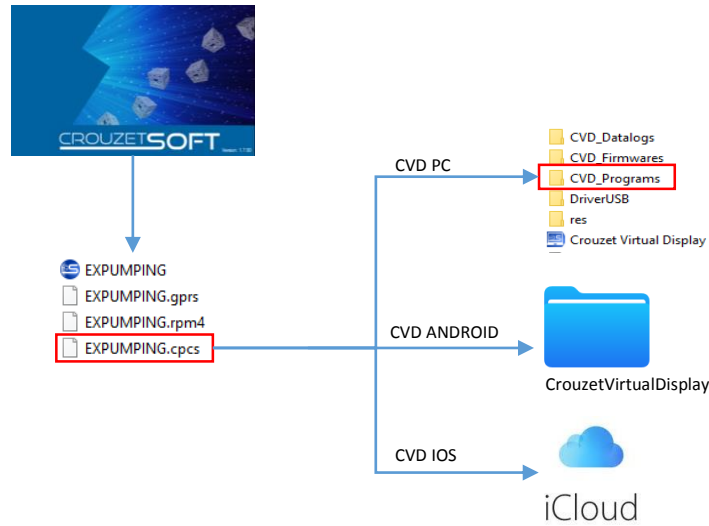


Figure – working system

2 UTILIZATION OF CVD PC

2.1 USER INTERFACE

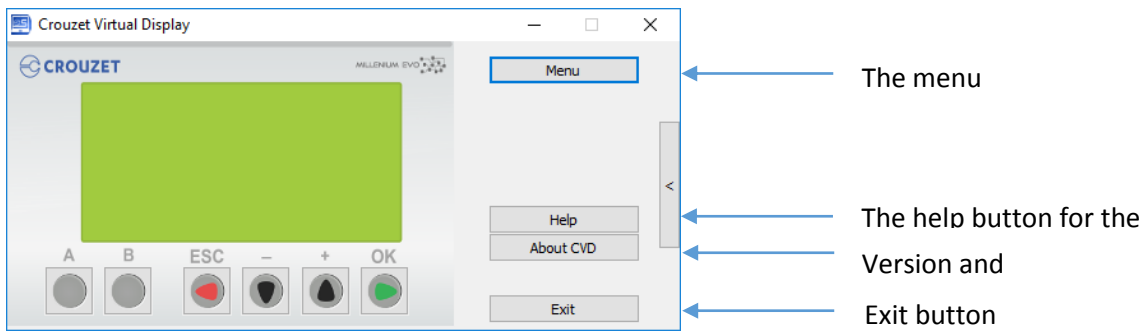


Figure 1– CVD PC User interface

By clicking on the menu button, you find the main functionalities. The help describe them

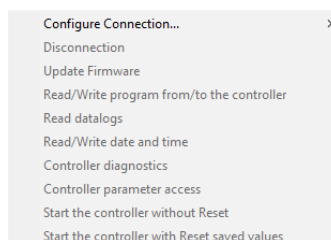


Figure 2 – CVD PC Menu button

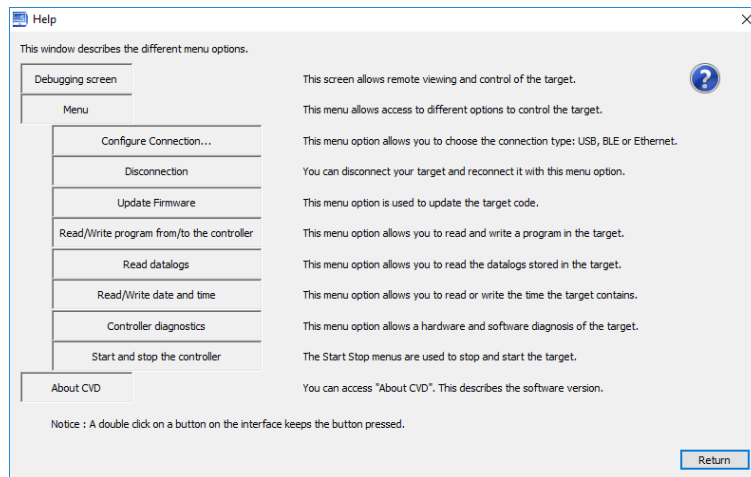


Figure 3 – CVD PC Help Button

2.2 THE CONNECTION

By clicking on the configuration button, you have three possibility.

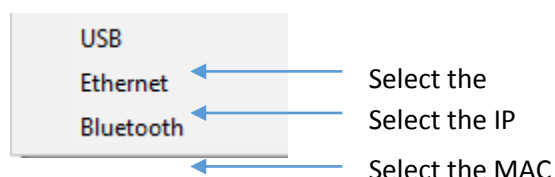


Figure 4 – CVD PC Three connection option

3 UTILIZATION OF CVD SMARTPHONE

3.1 USER INTERFACE

- Back to the network →
- ON / OFF Vibrating →
- Help (not finished) →
- Version and →
- Exit button →

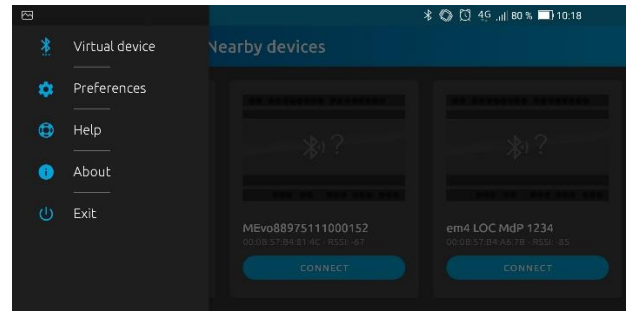


Figure 5 – CVD Smartphone user menu

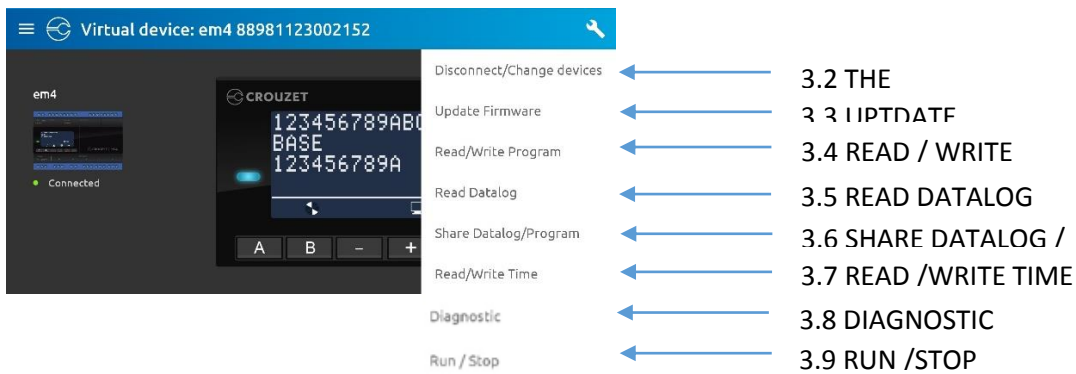


Figure 6 – CVD Smartphone fonctionnality menu

3.2 THE CONNECTION

First the application will ask for Bluetooth activation permission to scan the network. The plc detected will be displayed on screen. The user must click on the connect button.

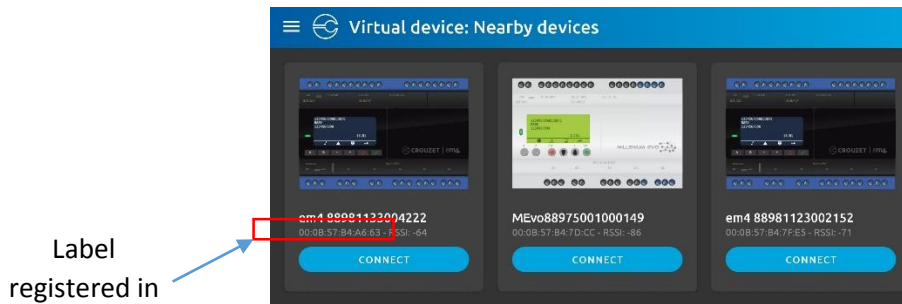


Figure 7 – CVD Smartphone scan network interface

When you are connected you have the screen down below.



Figure 8 – CVD Smartphone connected interface

3.3 UPDATE FIRMWARE

You must download firmware on your phone before used this option

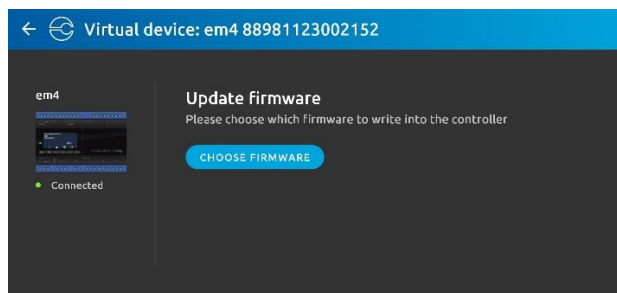


Figure 9 – CVD Smartphone update firmware interface

3.4 READ /WRITE PROGRAM

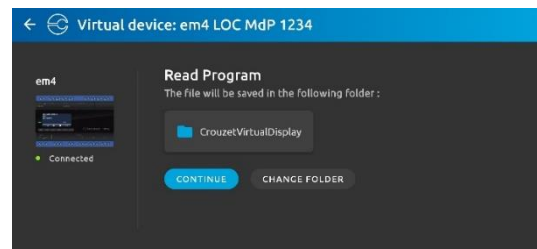
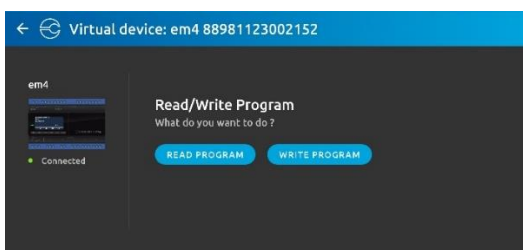


Figure 10 – CVD Smartphone Read / Write interface

For this option you must select a folder to read or write a program.

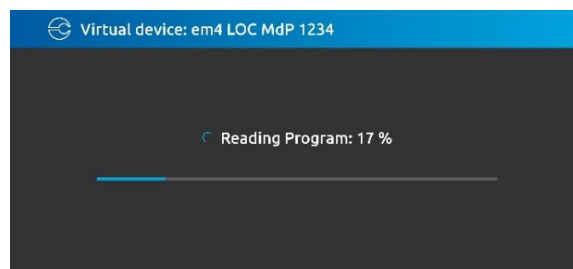


Figure 11 – CVD Smartphone read program example

3.5 READ DATALOG

The same for read Datalog. It possible to use the same folder.

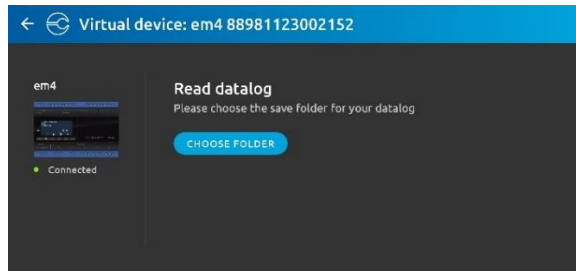


Figure 12 – CVD Smartphone read datalog

3.6 SHARE DATALOG / PROGRAM

You can choose the folder that contains program or Datalog to share it by multi-choice application.

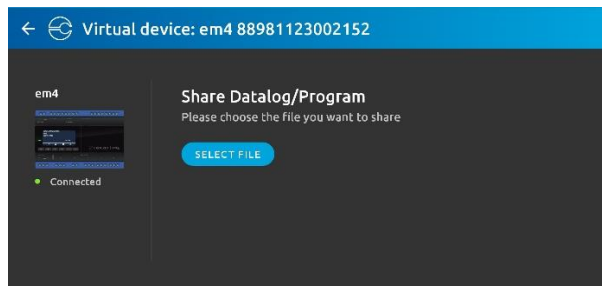


Figure 13 – CVD Smartphone Share datalog / Program

3.7 READ /WRITE TIME

Read / write time allows to change the date.

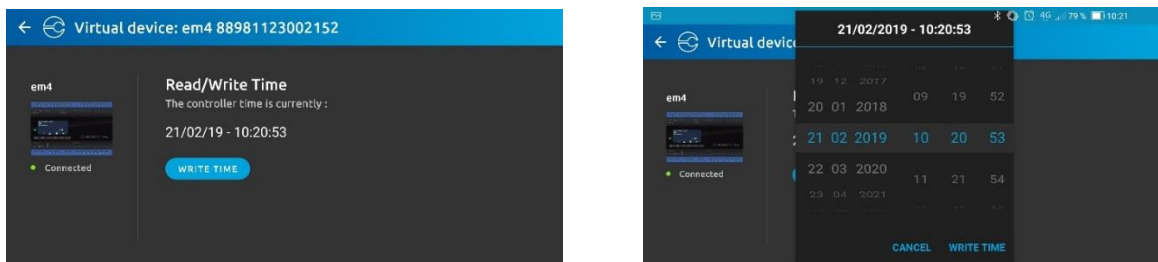


Figure 14 – CVD Smartphone Read / Write time

3.8 DIAGNOSTIC

Same functionality presents on Crouzet Soft.

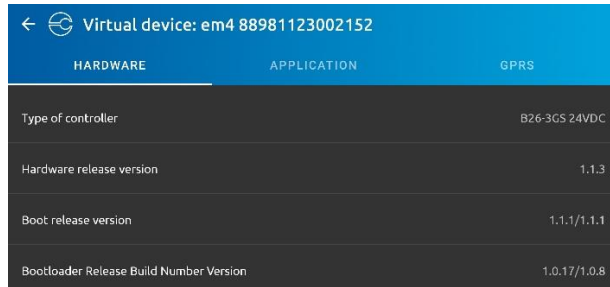


Figure 15 – CVD Smartphone diagnostic

3.9 RUN /STOP

The RUN / STOP option is a toggle button. This option is asked automatically to the user when the function used needs to stop the PLC.

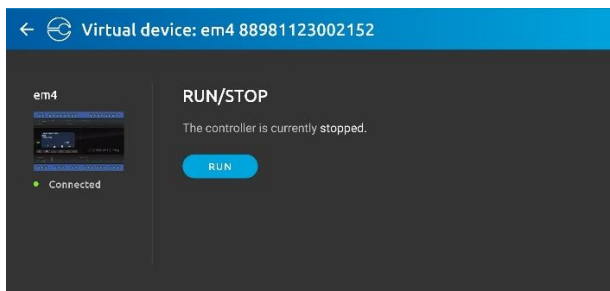


Figure 16 – CVD Smartphone Run / Stop interface