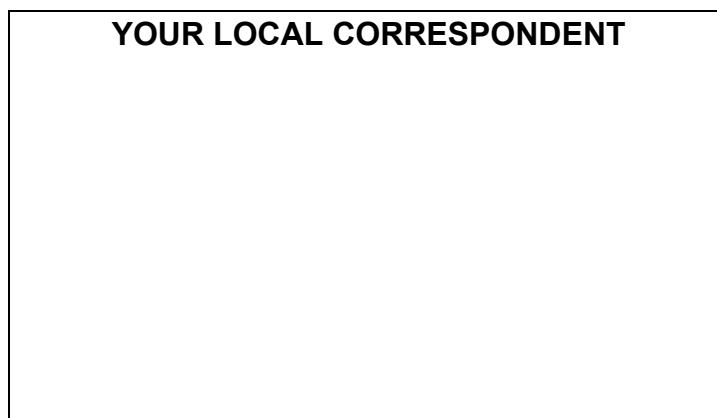


Contents

1. PARVEX MOTION EXPLORER INSTALLATION	2
1.1 Hardware and Software Set-up	2
1.2 User's licence	2
1.3 Installation - Operating Mode	3
2. PARVEX CONTROL PANEL	4
2.1 Functions of the software	4
2.2 Presentation	4
2.2.1 Choice of the language	6
2.2.2 Recording of the configuration	6
2.2.3 Restoring the configuration	7
2.2.4 Configuration of connections	8
2.2.5 Selecting the Digivex Drive for parameter-setting	9

Characteristics and dimensions can be modified without notice.



SSD Parvex SAS
8 Avenue du Lac / B.P 249 / F-21007 Dijon Cedex
Tél. : +33 (0)3 80 42 41 40 / Fax : +33 (0)3 80 42 41 23
www.SSDdrives.com

1. PARVEX MOTION EXPLORER INSTALLATION

1.1 Hardware and Software Set-up

- IBM™ PC office or industrial computer or compatible
- Intel Pentium® processor or equivalent
- Windows® version 98, Millenium, Windows® NT version 4.0 (service pack 4 or higher recommended), 2000 or XP.
- Minimum 8 MB RAM (recommended 16 MB)
- VGA colour screen
- 1 parallel port
- 1 or more RS232 serial ports
- Colour printer advisable
- Pointing device (mouse, trackball or equivalent)
- Software installation requires 20 to 40 MB hard disc space.

Attention :

A printer driver must be installed to provide satisfactory *PME* software operation. It is not essential though to physically connect a printer.

An installation utility creates the directories required and implants the system files on your PC hard disc. Required disc space is about 40 MB.

1.2 User's licence

Parvex Motion Explorer PME software is licensed.

The terms and conditions for using Parvex Motion Explorer software can be consulted during or after installation by displaying the contents of the Licence.F text file in the pme directory.

PME software is available on CD-ROM.

Users are authorised to make a back-up copy (internal use only). This copy shall under no circumstances be transferred, given away, rented, sold or installed at a third party's.

Enter the license number supplied with the original CD-ROM when installing the software. This number must be quoted on any correspondence concerning the product.

1.3 Installation - Operating Mode

The Parvex Motion Explorer installation program creates the necessary folders and recopies the files on to your computer using an information carrier.

How to install the program from a CD-ROM:

- Start up your PC.
- Under Windows[®], insert the CD-ROM in the CD-ROM player.
- An "auto run" program begins automatically after several seconds.
- Follow the instructions for installing the program.

If the "auto run" program does not start up:

- Click on "Start", then select "Settings" and "Control Panel".
- Double click on the "Add / Remove programs" icon.
- Select the "Install / Uninstall" tab.
- Click on "Install": Windows[®] automatically searches for the executable program, then asks the user to start "setup.exe".

Uninstalling:

- Back-up any files that you wish to keep.
- Click on "Start", then select "Settings" and "Control Panel".
- Double click on the "Add / Remove programs" icon.
- Select the "Install / Uninstall" tab, followed by "Parvex Motion Explorer".
- Click on "Add / Remove" in order to start up the deletion program.
Follow the instructions on the screen. All files from the Parvex Motion Explorer software will be deleted. Only the user files located under the Parvex\Pme\App_User\ directory and the database file that deals with specific motors will be preserved.

2. PARVEX CONTROL PANEL

2.1 Functions of the software

This control panel allows:

- the launching of the various modules associated with PARVEX products (digital speed controllers DIGIVEX Drive and DIGIVEX Motion).
- the selection of the language chosen for the display.
- the recording and restoring of the workspace configurations.
- the configuration of the modules associated with a serial link.

2.2 Presentation



This control panel is of reduced size and can remain permanently above the other windows (configuration option). It comprises the following elements:

- a menu giving access to all the commands.
- a panel of short cut buttons.
- a notebook with tabs to start the programs.

control panel



Menu choices and short cut buttons

Control of menu	Button	Action
File Close all		Close all the modules in execution.
File Exit		Close all the modules in execution then close the PARVEX Motion Explorer program.
Configuration Connections		Open the dialogue/dialog box allowing for choice of the parameters of the modules connectable to a serial link.
Configuration Language ...		Allows to choose the language in which all the softwares will function. Its action is immediate.
Configuration Workspace Save configuration		Open the dialogue/dialog box allowing to record the screen configuration in a list.
Configuration Workspace Restore configuration		Open the dialogue/dialog box allowing to restore a screen configuration chosen in a list.
Configuration Always on top		When this menu choice is checked, the window always remains on top of the other windows, if not it behaves normally.
Programs CYBER... Installation parameters Editor		Start the installation parameters program editor.
Programs CYBER... ISO program Editor		Start the ISO program editor.
Programs CYBER... L parameters Editor		Start the L parameters editor.
Programs CYBER... Keyboard ...		Start the CYBER operator panel module.
Programs Digivex		Opens the drive-type selection window for Digivex Drive parameter-setting
Programs Digivex Motion		Start the DIGIVEX MOTION module
? About		Display the dialogue/dialog box of identification of the software.

2.2.1 Choice of the language

The menu **Configuration | Language** makes it possible to change the language of the control panel **PARVEX Motion Explorer**, and of all the modules in execution.

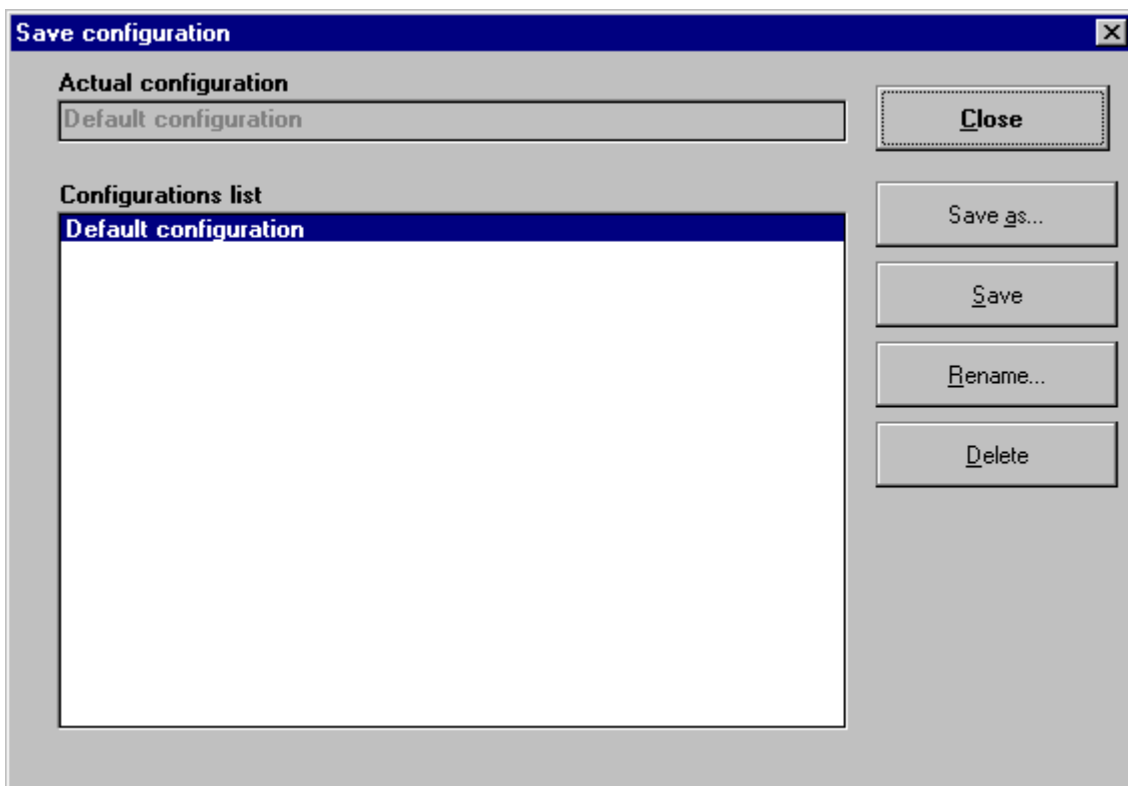
Languages available:

- French.
- English.
- German.
- Spanish.

2.2.2 Recording of the configuration

The user can record the placement of the windows on the screen. It is the position at the time of the recording which is memorized. At following starts of PARVEX Motion Explorer software, all the modules recorded in the configuration will start automatically and the user will immediately find the memorized configuration of the screen.

The dialogue/dialog box of configuration recording.



This dialogue/dialog box contains:

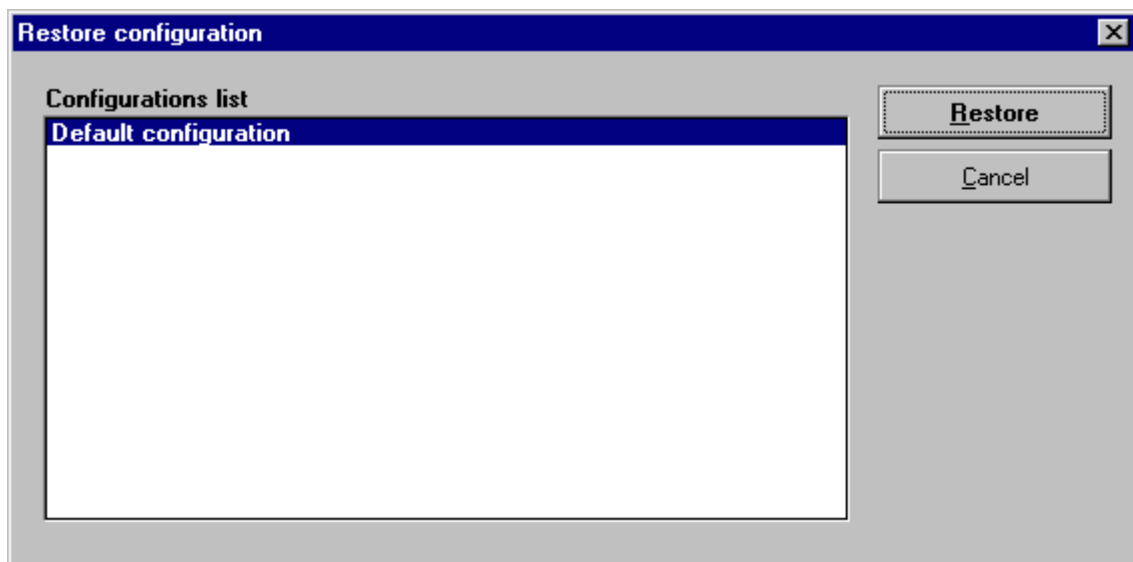
- current configuration.
- the list of the recorded configurations.
- buttons allowing to carry out various operations on the configurations.

Button	Action
Save as...	Save the configuration under a name entered by the user.
Save	Save the current disposition of the screen as the current configuration.
Rename	Change of the name of the highlighted configuration.
Delete	Remove the configuration in intensified brightness.

2.2.3 Restoring the configuration

The user can restore a screen configuration previously recorded. It is enough to choose a configuration in the list and click on the « Restore » button.

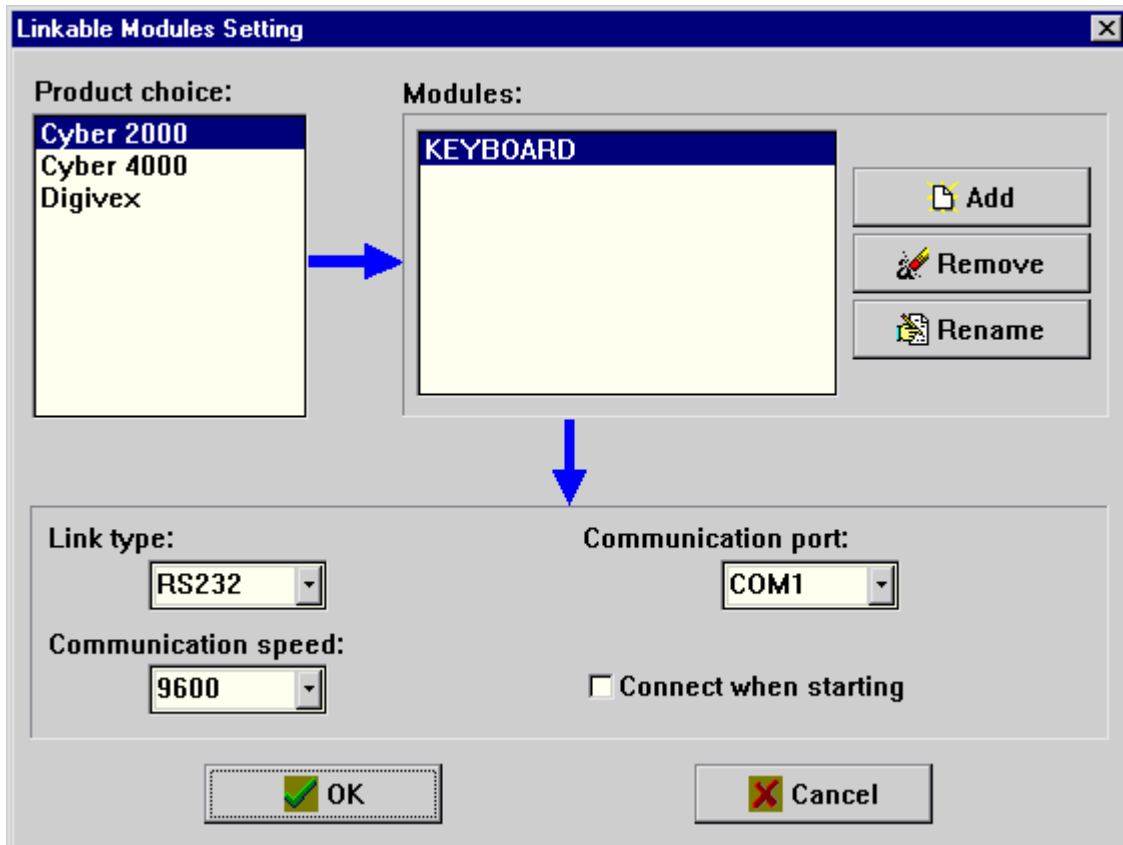
The dialogue/dialog box of configuration restoration



2.2.4 Configuration of connections

This dialogue/dialog box makes it possible to configure the modules connections.

The dialogue/dialog box of connection configuration



PARVEX Products Box

List PARVEX products that can be controlled through PME.

Module Box

List the modules for each product using a link to be connected.

The displayed modules are those of the product selected in the « Products list box ».

Button Add

Click on this button to open the dialogue/dialog box « Add module » which makes it possible to add linkable modules.

Button Remove

Click on this button to remove the module selected in the modules list box.

Button Rename

Click on this button to display the dialogue/dialog box « Rename module » which makes it possible to rename the module selected in the modules list box.

Combo box Link Type

Allows to choose the link type to be used for the connection of the module selected in the modules list box.

Combo box Communication port

Allows to choose the communication port to be used for the connection of the module selected in the modules list box.

Combo box Communication Speed

Allows to fix the communication speed for the module selected in the modules list box.

Check box Automatic Connection when starting

When this box is checked, the module selected in the modules list box will be connected automatically when the program starts.

Notice

According to the type of product, some elements of the box are not available.

2.2.5 Selecting the Digivex Drive for parameter-setting

This dialogue box is for launching the parameter-setting module associated with a particular type of Digivex Drive.

