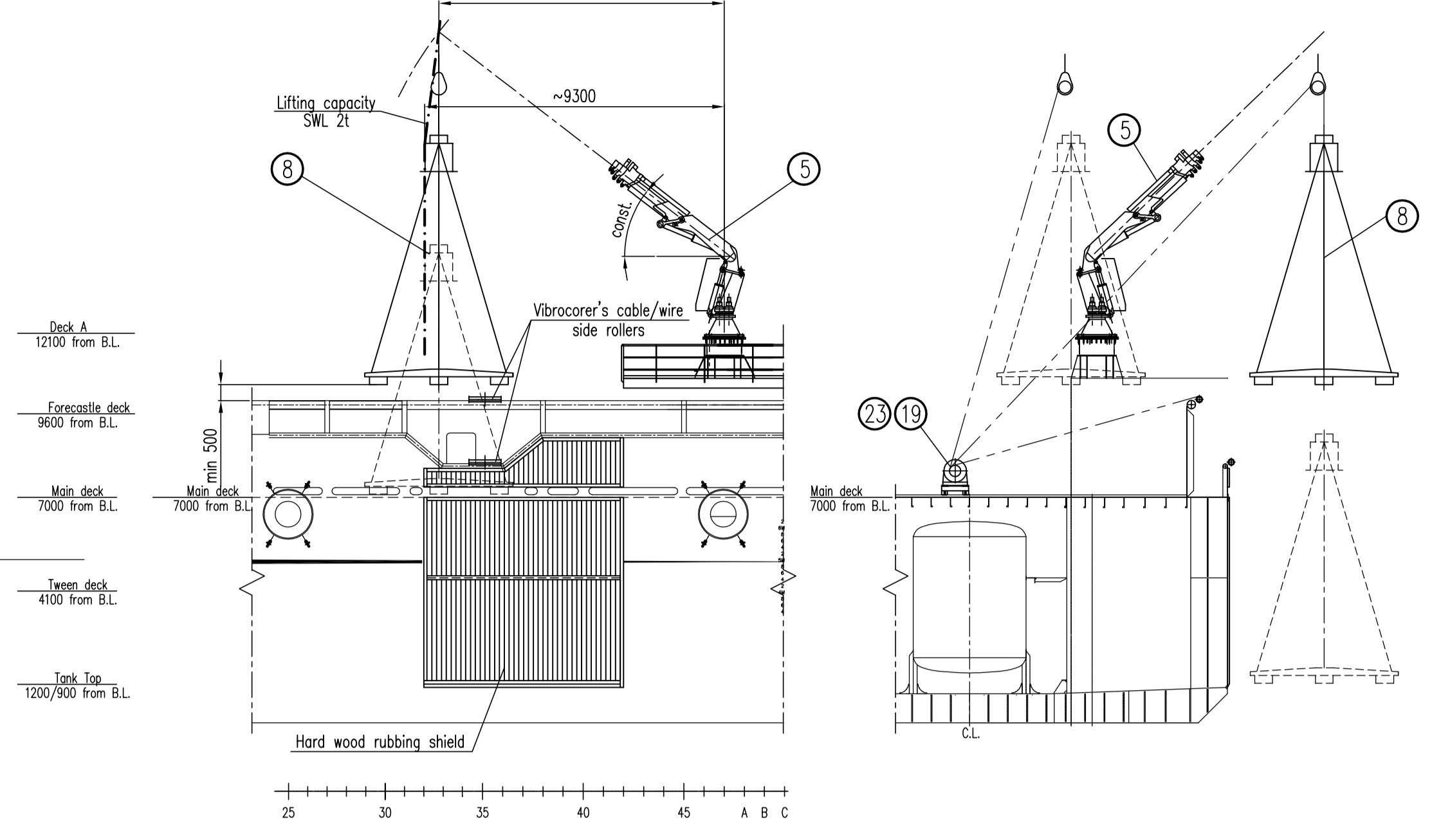
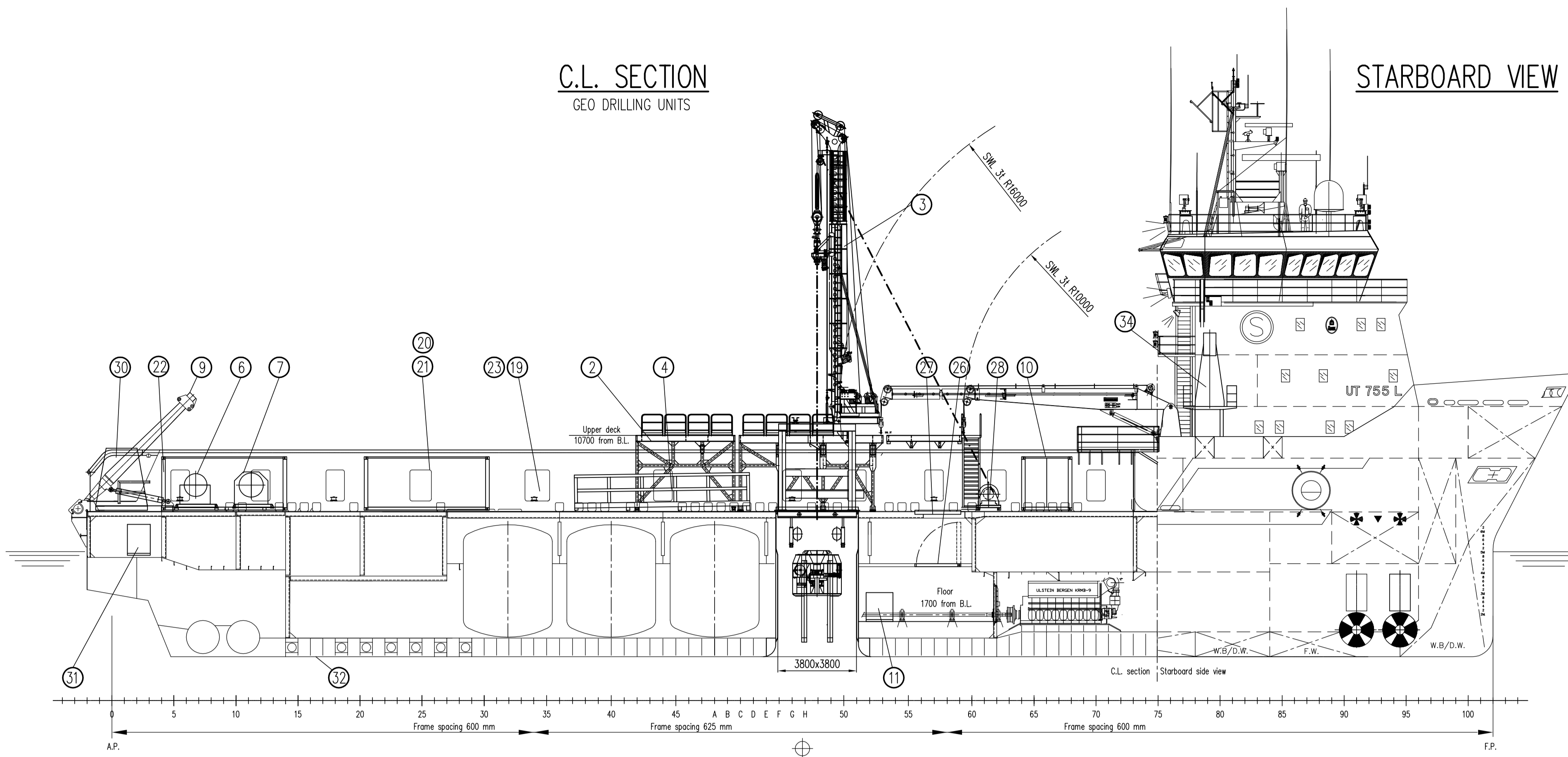


C.L. SECTION
 GEO DRILLING UNITS

STARBOARD VIEW

STARBOARD VIEW
 GEO DRILLING UNITS

FR.35
 GEO DRILLING UNITS

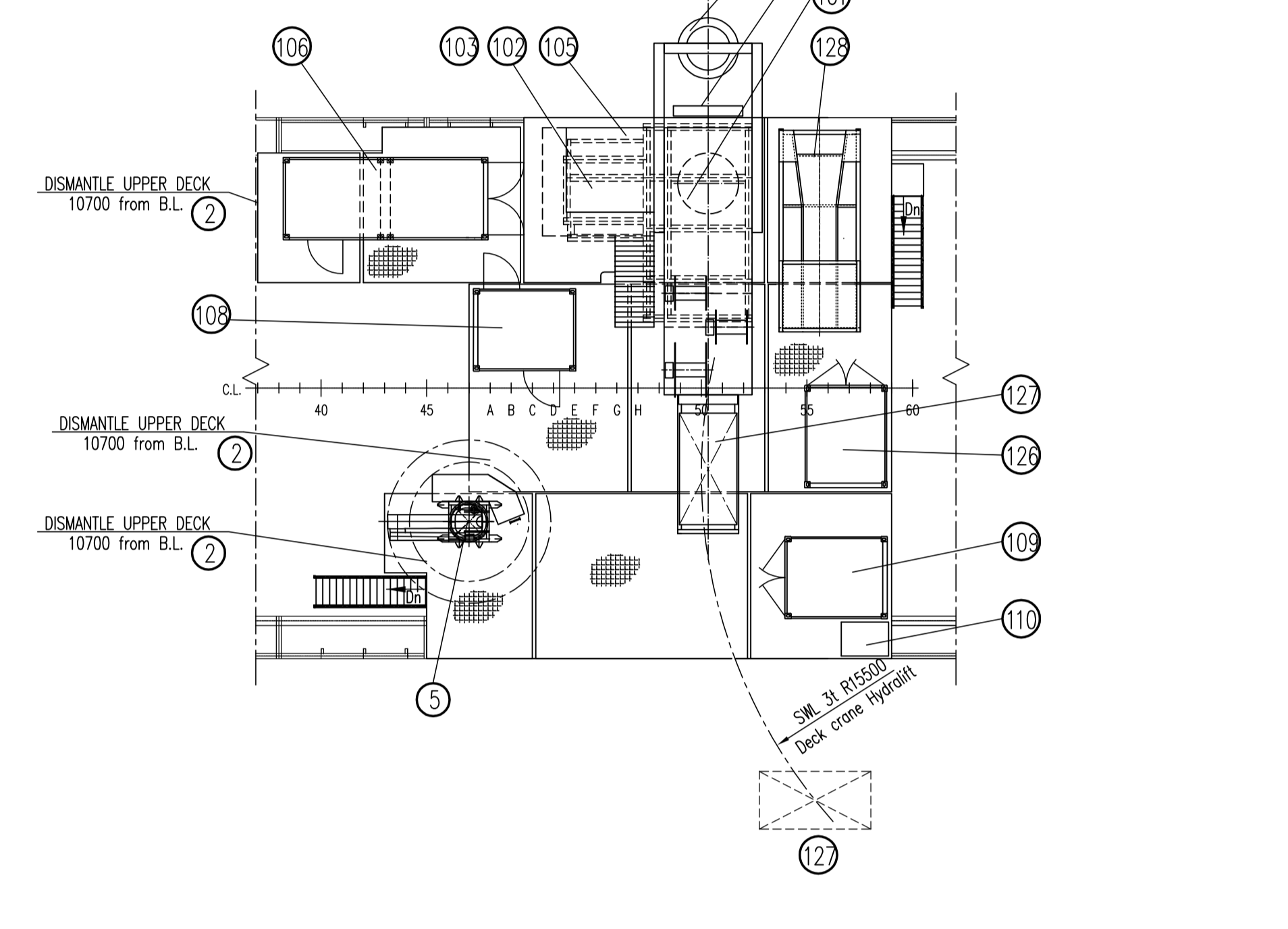
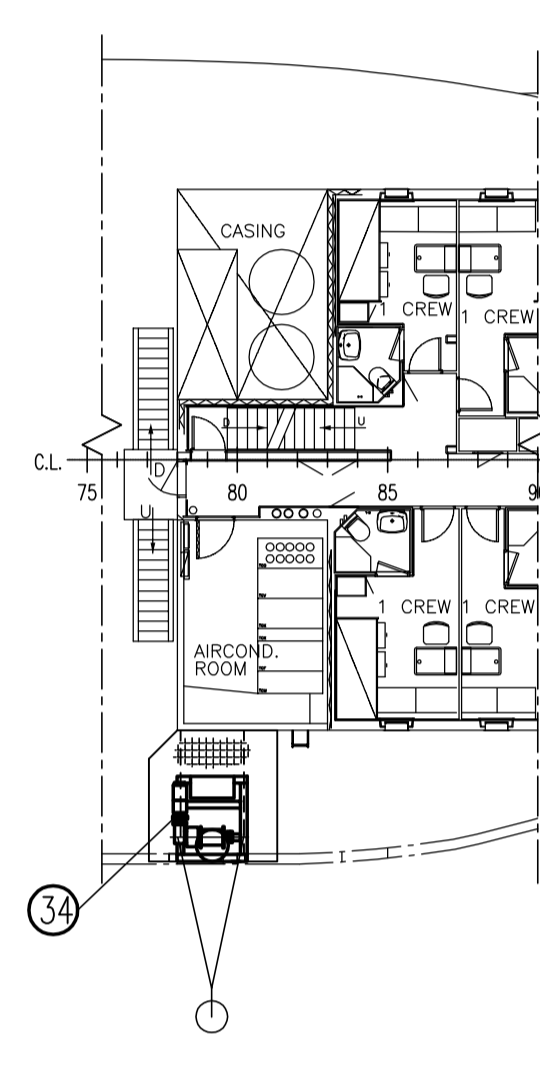
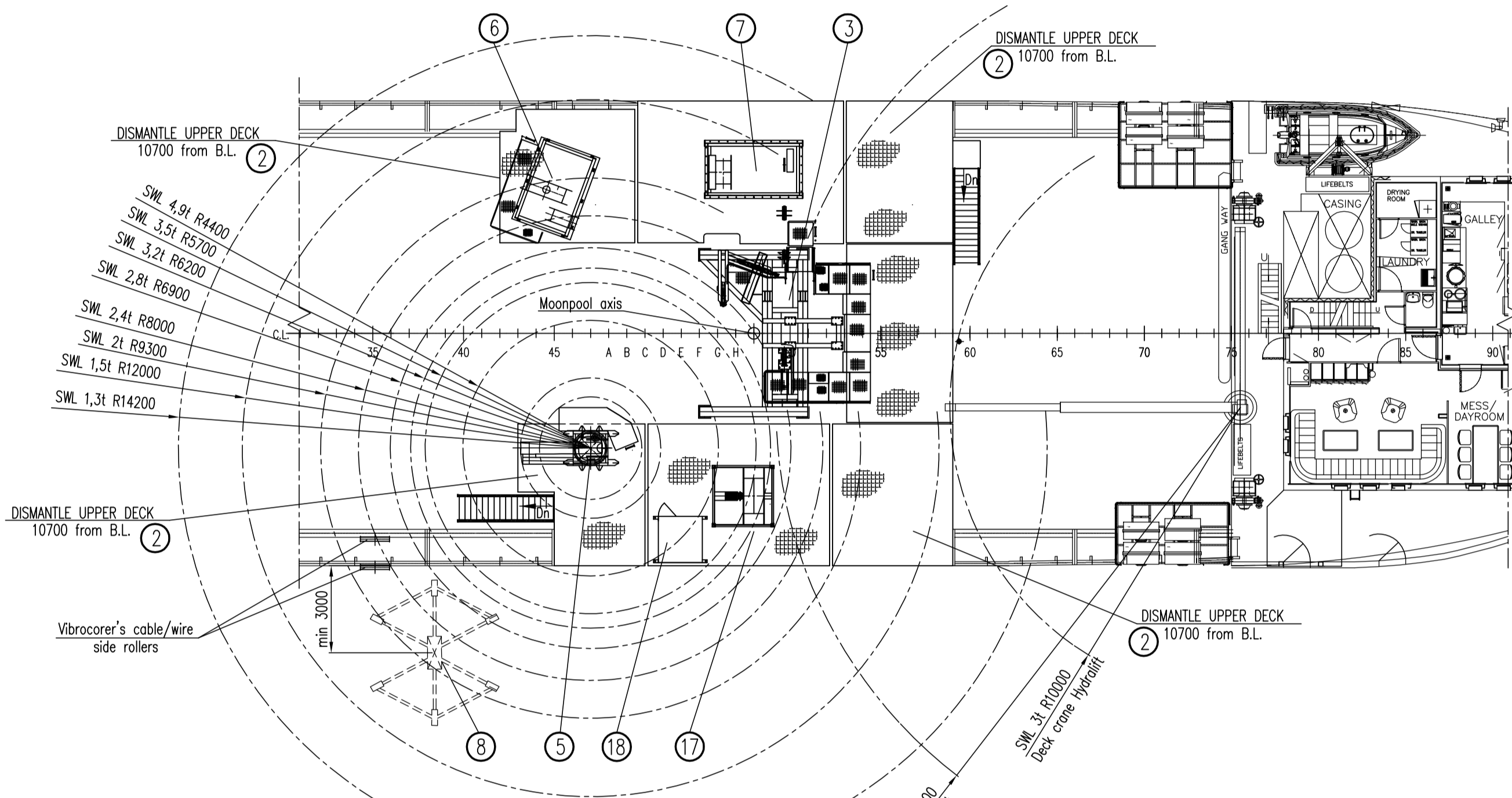


UPPER DECK
 GEO DRILLING UNITS
 10700 from B.L.

FORECASTLE DECK
 9600 from B.L.

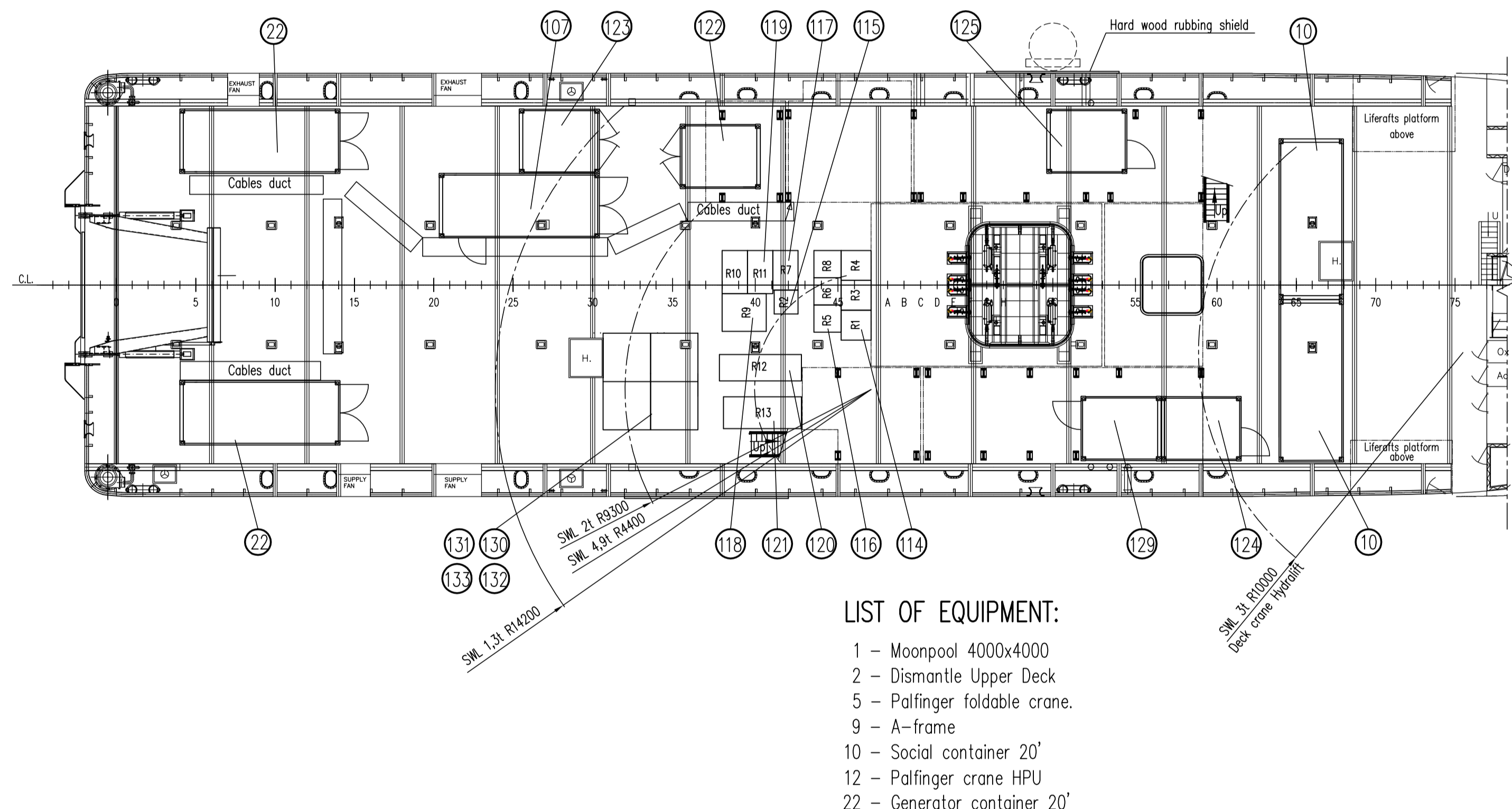
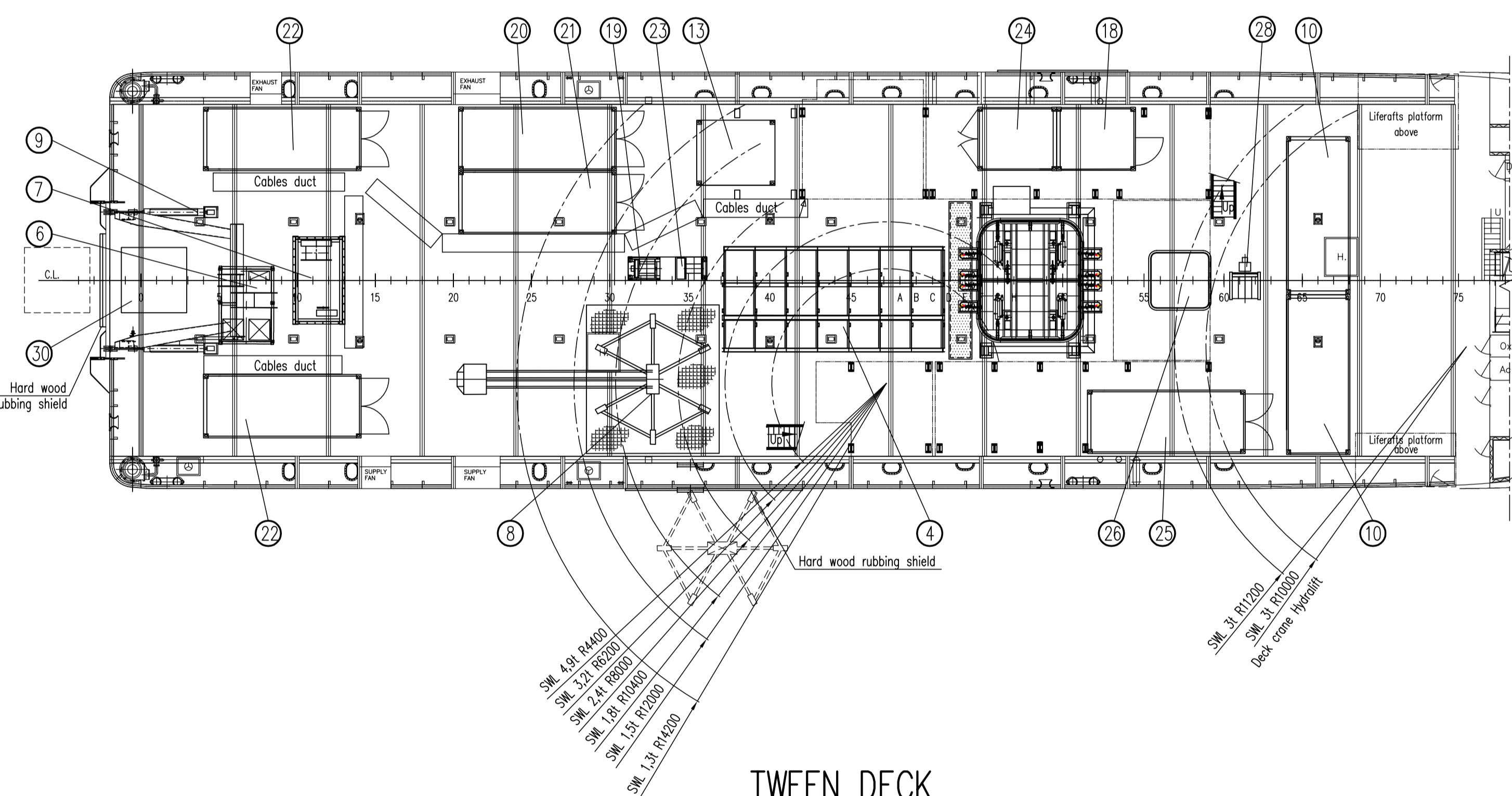
DECK A
 12100 from B.L.

UPPER DECK
 AF-2 DIVING SYSTEM
 10700 from B.L.

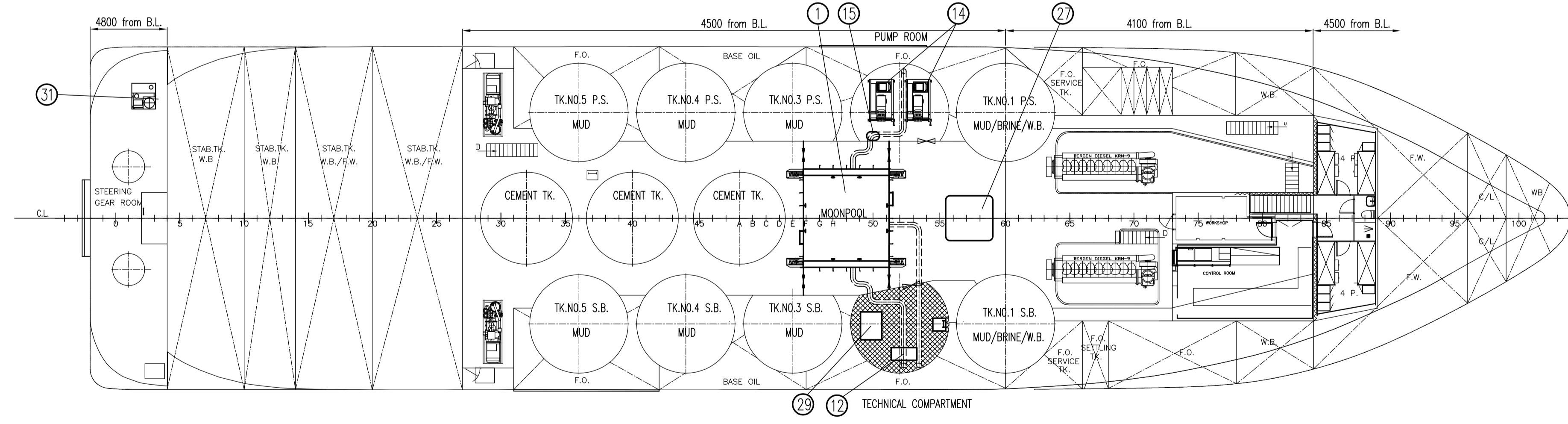


MAIN DECK
 GEO DRILLING UNITS
 7000 from B.L.

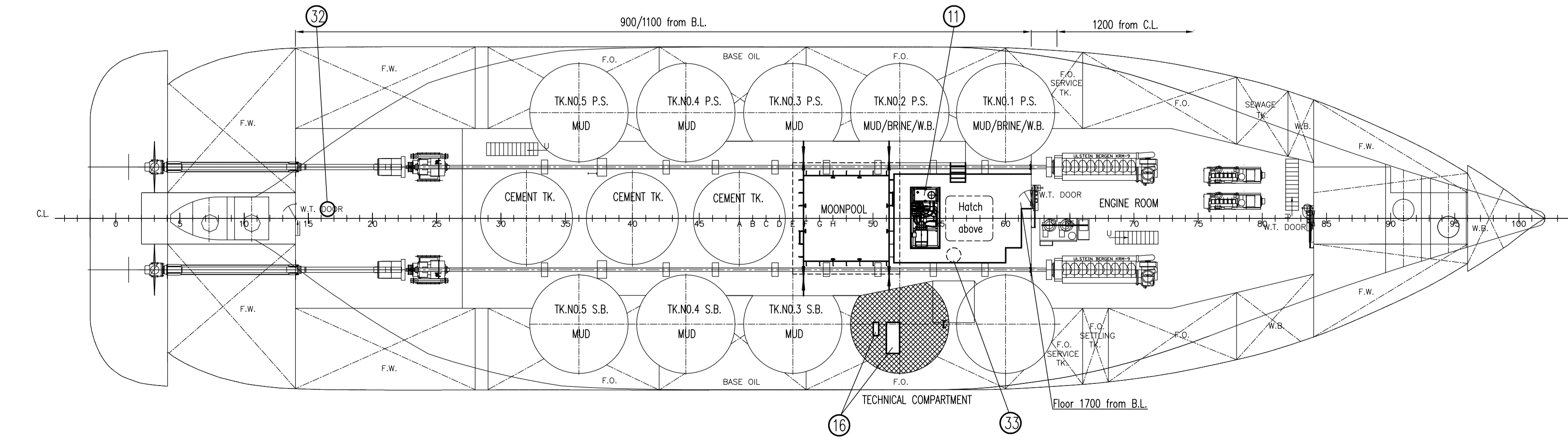
MAIN DECK
 AF-2 DIVING SYSTEM
 7000 from B.L.



TWEEN DECK
 4100/4500/4800 from B.L.



TANK TOP
 900/1200 from B.L.



LIST OF EQUIPMENT:

- | | | |
|----------------------------------|--|----------------------------------|
| 1 - Moonpool 4000x4000 | 101 - Hyperbaric unit | 122 - Compressors container |
| 2 - Dismantle Upper Deck | 102 - HPU | 123 - Store container |
| 3 - Palfinger foldable crane | 103 - Control room | 124 - Supervisor container |
| 4 - A-frame | 104 - Diving bell | 125 - ROW control container |
| 5 - Social container 20' | 105 - Frame | 126 - Stand-by diver container |
| 6 - Palfinger crane HPU | 106 - LSS1 and compressor container | 127 - HRC chamber |
| 7 - Generator container 20' | 107 - Workshop container | 128 - Diver hoisting unit MOBNUR |
| 8 - Flush Watertight Hatch 2x2m. | 108 - Container LSS2 | 129 - Dive Coordinator container |
| 9 - Flush Hatch 2x2m. | 109 - Water electric heater container | 130 - Set of dive gas cylinders |
| 10 - Voltage Converter | 110 - Diesel heater | 131 - Set of dive air cylinders |
| 11 - A-frame HPU | 111 - Ballast | 132 - Set of dive gas cylinders |
| 12 - Echo transducer | 112 - Set of dive air cylinders R1,R3,R4 | 133 - Set of dive gas cylinders |
| 13 - Echo transducer | 113 - Set of dive air cylinders R2 | |
| 14 - LTV Taut Wire | 114 - Set of dive air cylinders R5,R6,R8 | |
| | 115 - Set of dive air cylinders R7 | |
| | 116 - Set of dive air cylinders R9 | |
| | 117 - Set of dive air cylinders R10 | |
| | 118 - Set of dive air cylinders R11 | |
| | 119 - Set of dive air cylinders R12 | |
| | 120 - Set of dive air cylinders R13 | |
| | 121 - Set of dive air cylinders R14 | |

GEO DRILLING UNITS

- 3 - Drilling unit
- 4 - Drilling pipes rack
- 6 - Cable winch
- 7 - Winch of retaining unit/penetrometer Roson.
- 8 - Vibracore
- 11 - Drilling unit HPU
- 13 - Mud unit
- 14 - Mud pumps
- 15 - Mud tank
- 16 - Water pumps
- 17 - Wison winch.
- 18 - Penetrometer control container
- 19 - Vibracore winch.
- 20 - Lab container 20'.
- 21 - Drilling store container 20'.
- 23 - Vibracore cable winch.
- 24 - Drilling workshop container 10'.
- 28 - Pneumatic winch 10T.
- 30 - Penetrometer Ranson

AF-2 DIVING SYSTEM

- 101 - Hyperbaric unit
- 102 - HPU
- 103 - Control room
- 104 - Diving bell
- 105 - Frame
- 106 - LSS1 and compressor container
- 107 - Workshop container
- 108 - Container LSS2
- 109 - Water electric heater container
- 110 - Diesel heater
- 111 - Ballast
- 112 - Set of dive air cylinders R1,R3,R4
- 113 - Set of dive air cylinders R2
- 114 - Set of dive air cylinders R5,R6,R8
- 115 - Set of dive air cylinders R7
- 116 - Set of dive air cylinders R9
- 117 - Set of dive air cylinders R10
- 118 - Set of dive air cylinders R11
- 119 - Set of dive air cylinders R12
- 120 - Set of dive air cylinders R13
- 121 - Set of dive air cylinders R14

MAIN PARTICULARS:

L.O.A.	- 71,9 m
L.P.P.	- 66,8 m
BREADTH MLD	- 16,0 m
DEPTH MAIN DECK	- 7,0 m
DESIGN DRAFT	- 5,0 m
MAX DRAFT	APPROX - 5,9 m

CLASS:

PRS KM Special purpose ship / Supply vessel AUT-DP2

DESIGNED BY: 05.10.2017/R.S.	DATE: 05.10.2017	NAME: R.S.	SCALE: 1:150
CHECKED BY: K.J.	DATE: 05.10.2017	NAME: K.J.	SCALE: 1:150
ISSUED BY: K.L.	DATE: 05.10.2017	NAME: K.L.	SCALE: 1:150
PROJECT: SYLUR CONVERSION	DRAWING TITLE: GENERAL ARRANGEMENT		
3449-PT/0110-01		CLIENT: LOTOS Petrobaltic	